



S-Tag Monoclonal Antibody(3B3)

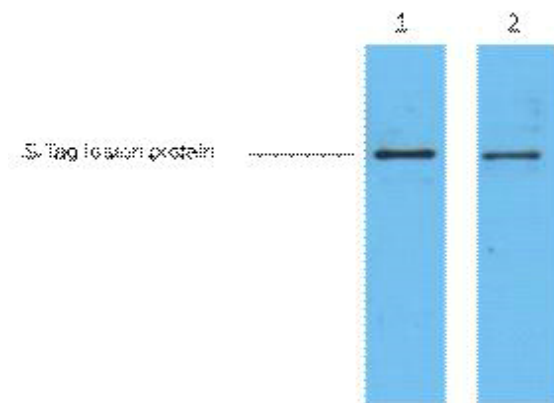
Catalog No	YP-Ab-04739
Isotype	IgG
Reactivity	Species independent
Applications	WB
Gene Name	
Protein Name	
Immunogen	Synthetic Peptide of S-Tag
Specificity	The antibody detects S tag fusion proteins.
Formulation	PBS, pH 7.4, containing 0.5%BSA, 0.02% sodium azide as Preservative and 50% Glycerol.
Source	Monoclonal, Mouse
Purification	The antibody was affinity-purified from mouse ascites by affinity-chromatography using specific immunogen.
Dilution	WB: 1:5000
Concentration	1 mg/ml
Purity	≥90%
Storage Stability	-20°C/1 year
Synonyms	
Observed Band	
Cell Pathway	
Tissue Specificity	
Function	
Background	S-tag is the name of an oligopeptide derived from pancreatic ribonuclease A (RNase A). If RNase A is digested with subtilisin, a single peptide bond is cleaved, but the resulting two products remain weakly bound to each other and the protein, called ribonuclease S, remains active although each of the two products alone shows no enzymatic activity. The N-terminus of the original RNase A, also called S-peptide, consists of 20 amino acids KETAAAKFERQHMDs. S Tag antibody can recognize C-terminal, internal, and N-terminal S-tagged proteins.
matters needing attention	Avoid repeated freezing and thawing!



Usage suggestions

This product can be used in immunological reaction related experiments. For more information, please consult technical personnel.

Products Images



2ug S-Tag fusion protein+ Primary antibody dilution at
1) 1:5000 2) 1:10000